



PARTS LIST FOR
PW-3002H
PW-3002R

ENGINE OIL GRADE:

HONDA/ SUBARU:

SAE10W-30

ENGINE OIL CAPACITY:

20 oz.

PUMP OIL GRADE:

Mi-T-M Pump Oil AW-4085-0016

PUMP OIL CAPACITY:

16 oz.

NOZZLE SIZE:

3.0

This Parts Listing has been compiled for your benefit. You can be assured your Cold Water Pressure Washer was constructed and designed with quality and performance in mind using over 25 years experience in the pressure washer business. Each component has been rigorously tested to insure the highest level of acceptance.

The contents of this Parts Listing are based on the latest product information available at the time of publication. The manufacturer reserves the right to make changes in price, color, materials, equipment, specifications or models at any time without notice.

WARNING

THIS IS A HIGH PRESSURE, COLD WATER PRESSURE WASHER. CAUTION SHOULD BE OBSERVED WHEN USING OR REPAIRING THIS UNIT! READ AND FOLLOW THE SAFETY WARNINGS LISTED BELOW BEFORE ATTEMPTING ANY REPAIRS ON THIS PRESSURE WASHER!

SAFETY WARNINGS

1. NEVER alter or modify the equipment. Be sure any accessory items and system components being used will withstand the pressure developed. Use only genuine parts for repair of your pressure washer. Failure to do so can cause hazardous operating conditions and will VOID warranty.
2. NEVER make adjustments on machinery while the unit is connected to the engine without first removing the ignition cable from the spark plug. Turning over the machinery by hand during adjustment or cleaning might start the engine and machinery with it, causing serious injury to the operator.
3. Know how to stop and bleed pressures quickly. Be thoroughly familiar with controls.
4. Before servicing the unit, turn unit off, relieve the water pressure and allow the unit to cool down. Do not make repairs while the unit is running. Service in a clean, dry, flat area. Be especially careful to properly dispose of any flammable materials.
5. After testing the machine, DO NOT leave the pressurized unit unattended. Shut off the unit and release trapped pressure before leaving.

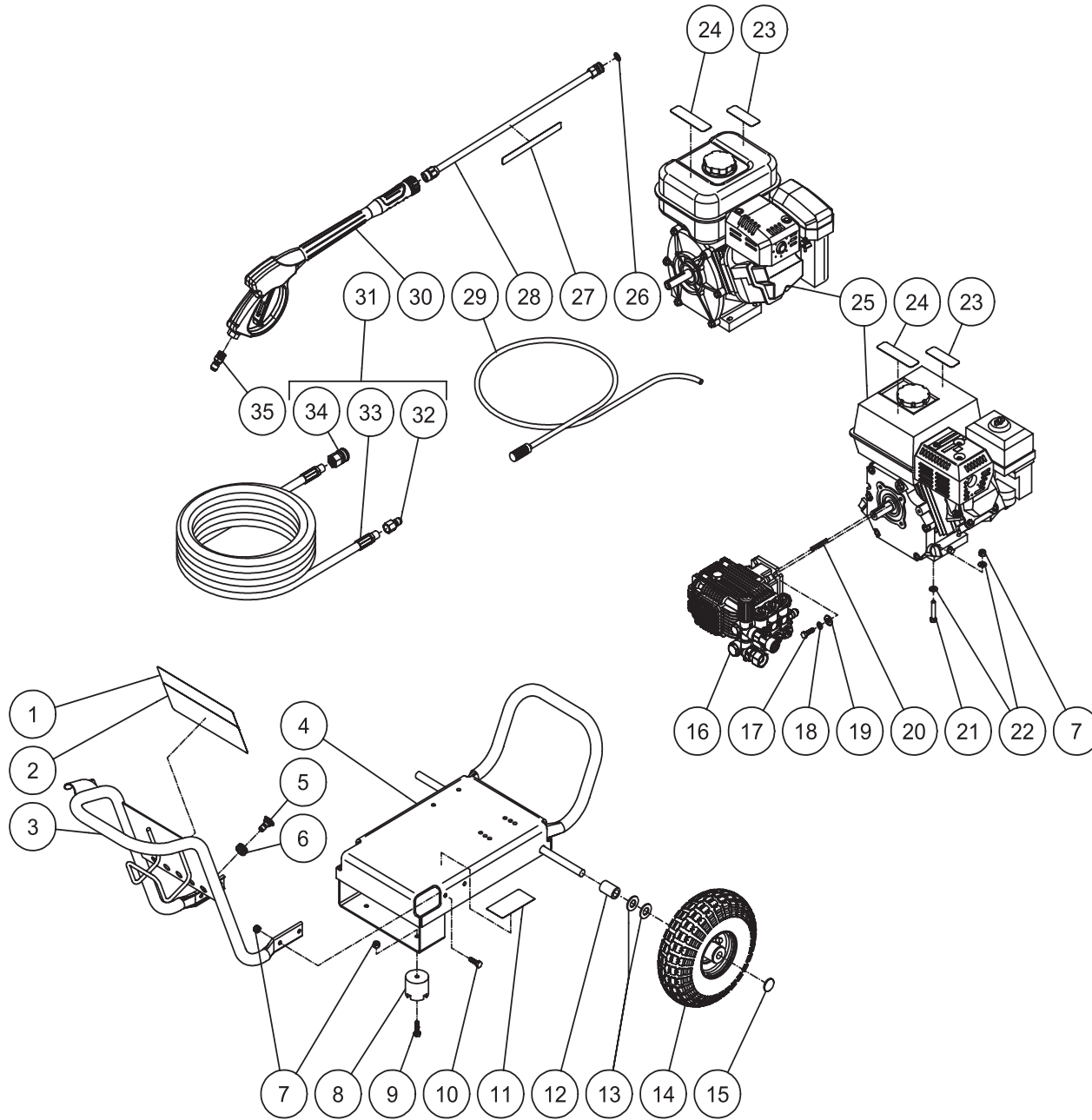
Table of Contents

SPECIFICATIONS	3
FRAME ASSEMBLY	4
PUMP ASSEMBLY (3-0297)	6
UNLOADER (8-0593)	8
DETERGENT INJECTOR (70-0499)	10

SPECIFICATIONS

MODEL NUMBER	PW-3002H	PW-3002S
Operating Pressure (PSI/Bar):	3000/207	
High Pressure Nozzle:	3.0	
Water Volume (GPM/lpm):	2.4/9.1	
Engine:	Honda	Subaru
Horsepower	6.5	7.0
Engine Type	4 Stroke, Overhead Valve, Single Cylinder	4 Stroke, Overhead Cam, Single Cylinder
Oil Type	SAE10W-30	
Oil Capacity (oz./liters)	20/6	
Fuel Type	Unleaded Gasoline 86 Octane Minimum	
Low Oil Protection	Oil Alert™	Oil Sensor
Fuel Capacity (gallon/ liters)	.95/3.6	
Starting	Recoil	
Maximum No Load RPM	3600 (+/- 100) RPM	
Pump:	Direct Driven, Oil Bath, Triplex Piston	
Oil Type	Mi-T-M Pump Oil AW-4085-0016	
Oil Capacity (oz./liters)	16/47	
Plungers	Ceramic	
Manifold	Forged Brass	
Valves	Stainless Steel	
Unloader	Adjustable	
Heat Dump Valve	Relieves heated water during unloader bypass stage	
Detergent Injector	Low pressure down stream from pump	
Unit Net Weight (lbs/Kg)	85/38.6	
Unit Shipping Weight (lbs/Kg)	110/49.9	
Unit Net Dimension (in/cm)	37Lx21Wx24.5H/94Lx53.4Wx62.3H	
Unit Shipping Dimension (in/cm)	30.5Lx21.5Wx28.5H/77.5Lx54.6Wx72.4H	

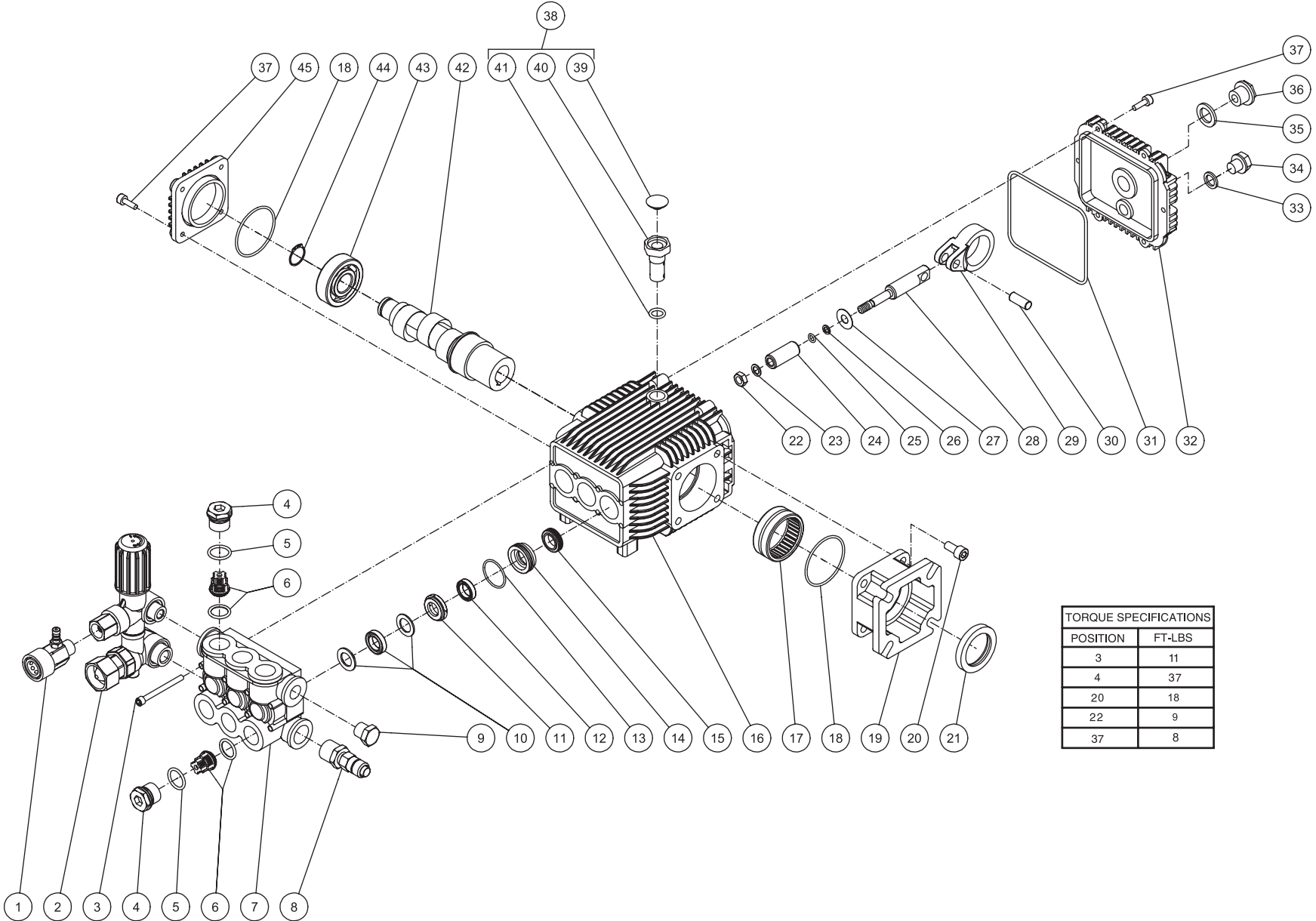
FRAME ASSEMBLY



WP-3000-AIHB_R-070908-CJB

FRAME ASSEMBLY FOR PW-3002H/PW-3000S								
REF. #	DESCRIPTION	PART #	QTY.		REF. #	DESCRIPTION	PART #	QTY.
1	Decal- PW-3000S	34-2119	1		18	Lockwasher	29-0007	4
-	Decal- PW-3002H	34-2120	1		20	Key	43-0073	1
2	Decal- Warning/Caution/Operation (See 34-9014)	N/A Sep.	1		21	Bolt	27-0070	4
3	Front Handle Assy	7-0194A01	1		19	Washer	28-0022	4
4	Small JP Frame	5-0253A53	1		22	Washer	28-0003	8
5	Nozzle- 1503	18-0150	1		23	Decal- Caution: Risk of Fire(See 34-9014)	N/A Sep.	1
-	Nozzle- 2503	18-0303	1		24	Decal- Warning: Muffler Hot (See 34-9014)	N/A Sep.	1
-	Nozzle- 6540	18-0148	1		25	Engine- 6.5 H.P. Honda	1-0088	1
6	Grommet	33-0001	5		25	Engine- 7.0 H.P. Subaru	1-0133	1
7	Locknut	30-0157	10		26	O-ring (Replacement Only)	25-0122	-
8	Isolator	14-0008	2		27	Decal- Warning: Risk of Injection (See 34-9014)	N/A Sep.	1
9	Bolt	27-0068	2		28	Lance Assembly	16-0366	1
10	Bolt	27-0067	4		29	Detergent Strainer	19-0233	1
11	Decal- Data Plate	N/A	1		30	Gun/Wand Assembly	16-0441	1
12	Axle Spacer	62-0176	2		31	Pressure Hose	15-0277	1
13	Washer	28-0008	4		32	Quick Connect	17-0006	1
14	Wheel	14-0113	2		33	Hose	N/A	1
15	Hubcap	33-0018	2		34	Quick Connect	17-0004	1
16	Pump	3-0297	1		35	Quick Connect	17-0005	1
17	Bolt	27-0092	4			Safety Decal Kit (Inc. 2, 23-24. 27)	34-9014	
*Must Order in One Foot Lengths								

PUMP ASSEMBLY (3-0297)

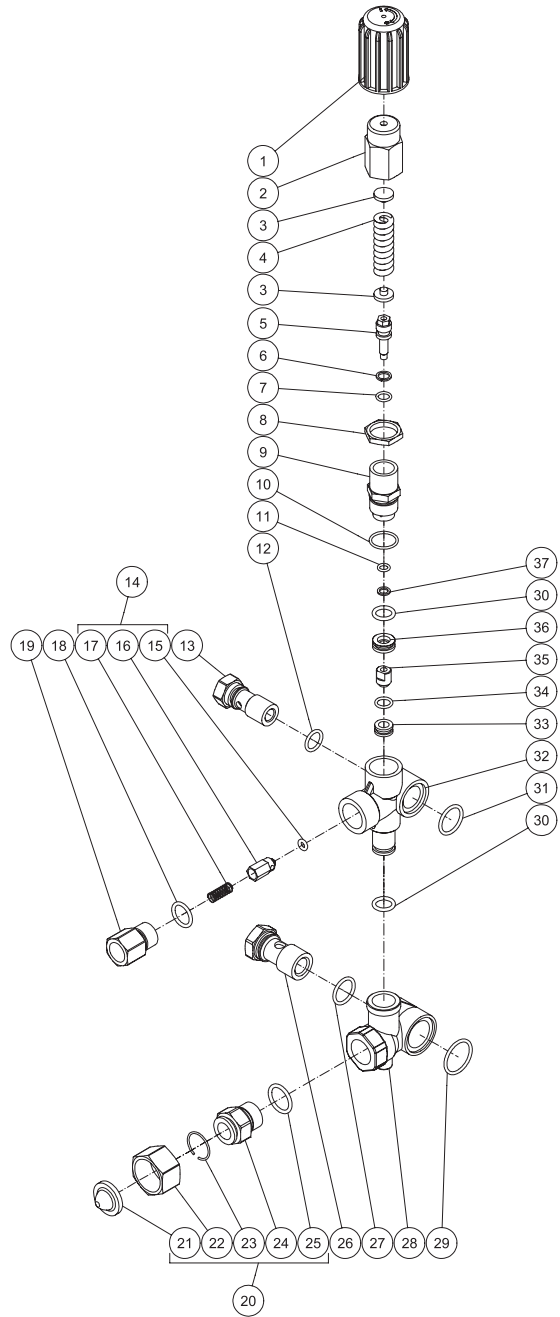


TORQUE SPECIFICATIONS	
POSITION	FT-LBS
3	11
4	37
20	18
22	9
37	8

3-0297-120607-JJT

PUMP ASSEMBLY (3-0297)							
REF. #	DESCRIPTION	PART #	QTY.	REF. #	DESCRIPTION	PART #	QTY.
1	Outlet Connector	70-0499	1	25	O-Ring	25-0163	3
2	Unloader Assembly	8-0593	1	26	Backup Ring	26-0321	3
3	Bolt	27-9598	8	27	Slinger Washers	46-1316	3
4	Valve Plug	39-0231	6	28	Plunger Guide	N/A	3
5	O-Ring	25-0118	6	29	Connecting Rod	N/A	3
6	Valve Assembly (see 70-0502)	N/A	6	30	Piston	N/A	3
7	Manifold Head	N/A	1	31	O-Ring	25-0604	1
8	Thermal Relief Valve	22-0005	1	32	Crankcase Cover	N/A	1
9	Outlet plug	39-0203	1	33	Gasket	26-0322	1
10	High Pressure Seal	N/A	3	34	Drain Plug	39-0232	1
11	Seal Compaction Ring	46-1311	3	35	Gasket	26-0323	1
12	Low Pressure Seal	N/A	3	36	Sight Glass Oil	46-1317	1
13	O-Ring	N/A	3	37	Screw	27-8401	10
14	Retainer Ring	46-1312	3	38	Dipstick	70-0503	1
15	Oil Seal	46-1313	3	39	Oil Plug Cover	N/A	1
16	Crankcase	N/A	1	40	Oil Plug	N/A	1
17	Needle Bearing	N/A	1	41	O-Ring	N/A	1
18	O-Ring	25-0603	2	42	Crankshaft	N/A	1
19	Flange	46-1314	1	43	Ball Bearing	48-0063	1
20	Screw	27-8431	4	44	Snap Ring	N/A	1
21	Oil Seal	26-0320	1	45	Cover Crankshaft	N/A	1
22	Hex Nut	30-6016	3		Valves Kit (Inc. 6 of 6)	70-0502	1
23	Plain Washer	28-0065	3		Packing Kit (Inc. 3 of 10, 12, 13)	70-0501	1
24	Plunger Ceramic	46-1315	3				

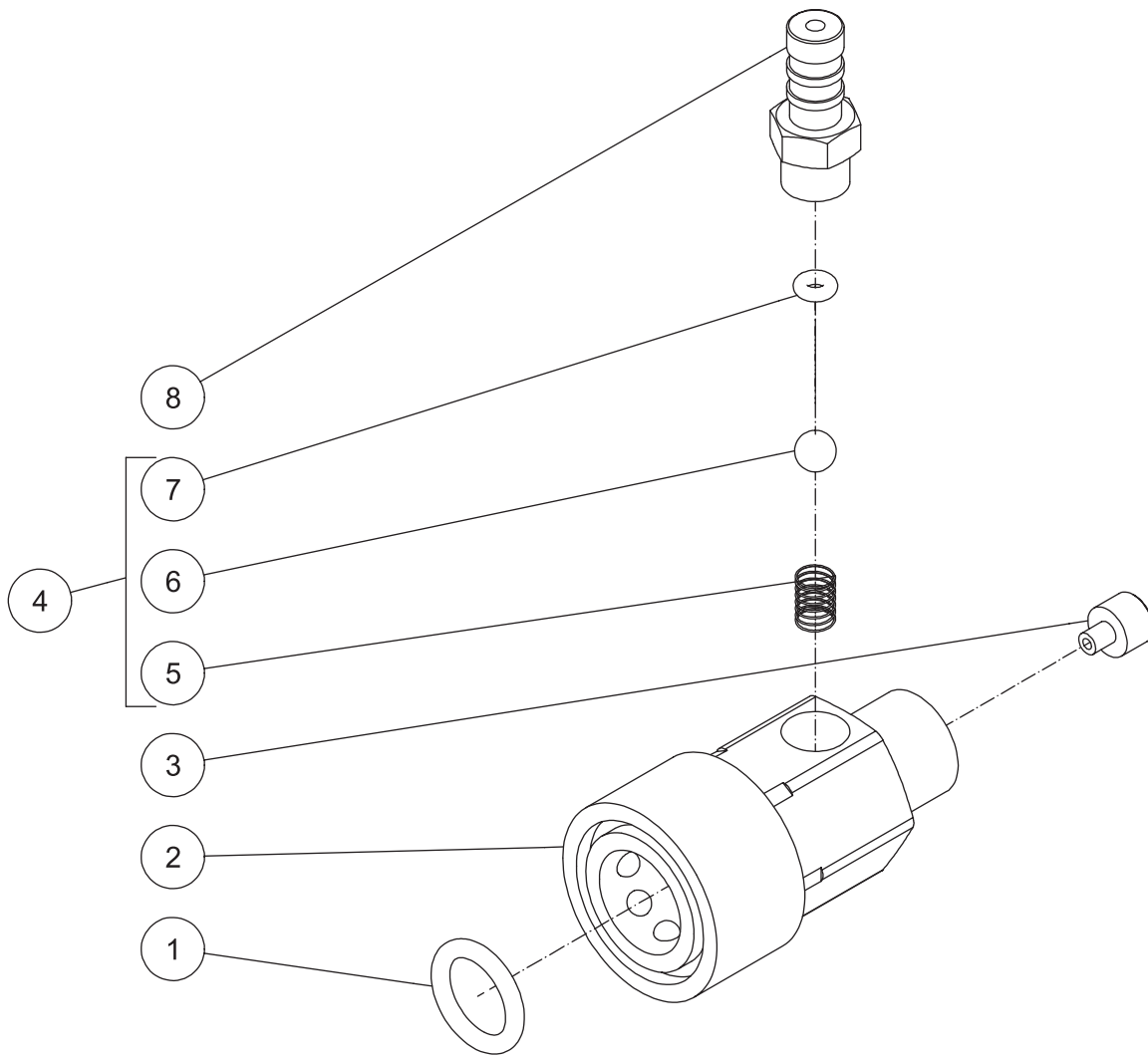
UNLOADER (8-0593)



8-0593-120607-JJT

UNLOADER ASSEMBLY (8-0593)								
REF. #	DESCRIPTION	PART #	QTY.		REF. #	DESCRIPTION	PART #	QTY.
1	Plastic Knob	N/A	1		20	Garden Hose	23-0095	1
2	Knob	N/A	1		21	Inlet Filter	N/A	1
3	Spring Seat	N/A	2		22	Swivel Nut	N/A	1
4	Spring	N/A	1		23	Retaining Ring	N/A	1
5	Valve Rod	N/A	1		24	Inlet Connector	N/A	1
6	Support Ring	N/A	1		25	O-Ring	N/A	1
7	O-Ring	N/A	1		26	Inlet Banjo Bolt	8-0595	1
8	Jam Nut	N/A	1		27	O-Ring	25-0602	1
9	Unloader Valve Body	N/A	1		28	By Pass Housing	N/A	1
10	O-Ring	N/A	1		29	O-Ring	N/A	1
11	O-Ring	25-0163	1		30	O-Ring	N/A	2
12	O-Ring	25-0169	1		31	O-Ring	N/A	1
13	Outlet Banjo Bolt	8-0594	1		32	Valve Housing	N/A	1
14	Non Return Valve	70-0500	1		33	Valve Seat	N/A	1
15	O-Ring	N/A	1		34	O-Ring	N/A	1
16	Checking Valve	N/A	1		35	Bullet	N/A	1
17	Spring	N/A	1		36	By Pass Jet Unloader	N/A	1
18	O-Ring	25-0386	1		37	Support Ring	N/A	1
19	Outlet Connector	N/A	1					

DETERGENT INJECTOR (70-0499)



70-0499 120607-JJT

DETERGENT INJECTOR (70-0499)			
REF. #	DESCRIPTION	PART #	QTY.
1	O-Ring	25-0123	1
2	Quick Connect	N/A	1
3	Water Injection Tube	N/A	1
4	Injector Repair Kit	70-0293	1
5	Spring	N/A	1
6	Ball	N/A	1
7	O-Ring	N/A	1
8	Soap Suction Nozzle	46-0869	1

Manufactured by Mi-T-M
8650 Enterprise Drive, Peosta IA 52068
563-556-7484/ Fax 563-556-1235